

# 7. Synchronization

## 7. Synchronization

### Synchronization

InfoQube supports the following types of synchronization:

1. Synchronization between computers using Dropbox
2. Synchronization with Google Services
3. Synchronization with Remote Databases

[Pierre Admin](#) 2016/11/22 21:41

- 39 views

#### 1. Synchronization between computers using Dropbox

1. Synchronization between computers using Dropbox

### Synchronization between computers using Dropbox

It is possible to use the same IQBase on multiple computers.

Following a simple setup, you'll be able to seamlessly edit information in your IQBase using any number of computers. If an instance detects a change, it will inform the user and use the updated copy. No need to close each instance of your IQBase to be able to use it on another computer.

The synchronization typically uses a sync service, such as Dropbox (though a LAN / WAN setup will work too).

#### A- Setup Instructions

To setup, follow these easy steps:

##### 1-Set-up folders

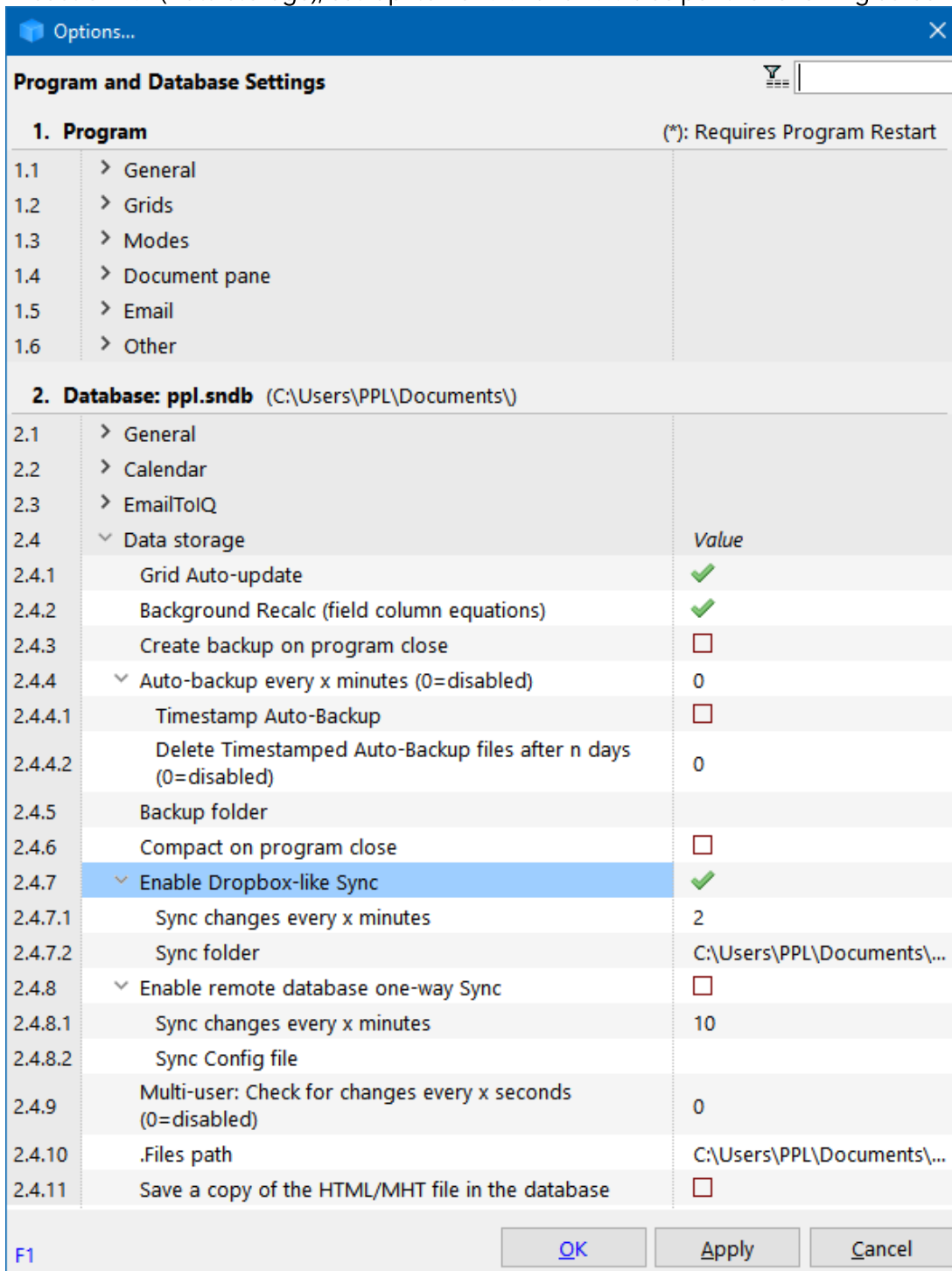
Let us assume that the user (User1) wants to have the IQBase in the folder IQBases of Documents. So on first computer (PC1):

- MyIQBase1.SNDB is located in C:\Users\User1\Documents\IQBases
- Backups can be located in C:\Users\User1\Documents\IQBackups  
Note that having backups is not really required since the sync process automatically copies the database to multiple computers and to Dropbox, which itself acts as an online backup
- Sync folder needs to be in a Dropbox folder (i.e. C:\Users\User1\Documents\Dropbox\IQBases\Sync)
- .Files folder (MyIQBase1.SNDB.Files) needs also to be a Dropbox folder (i.e. in C:\Users\User1\Documents\Dropbox\IQBases\MyIQBase1.SNDB.Files)

##### 2- Set-up the IQBase

- Start IQ and open C:\Users\Documents\IQBases\MyIQBase1.SNDB

- Open the Options dialog (Tools > Options)
- In section 2.4 (Data storage), set-up items 2.4.7 and 2.4.10 as per the following screenshot:



- A file named MyIQBase1.ini will be created to save these sync settings
- Note that in the above screenshot, the Sync and .Files folder now show the absolute path (i.e. C:\Users\User1\Documents\Dropbox\IQBases\...)

### 3- Set-up other computers

- Do step 1 above on the second computer (i.e. PC2). The IQBases folder on PC2 does not need to have the same path as on PC1 (to handle different account names)
- Copy MyBase1.SNDB from PC1 to PC2 or wait for the initial sync process to occur. The file MyBase1.SNDB will appear in the sync folder. Copy this file in the IQBases folder (i.e. C:\Users\User1\Documents\IQBases)

- Repeat step 2. The Sync and .Files folders shown will be those of PC1. If PC2 has a different folder structure, enter the correct folders.

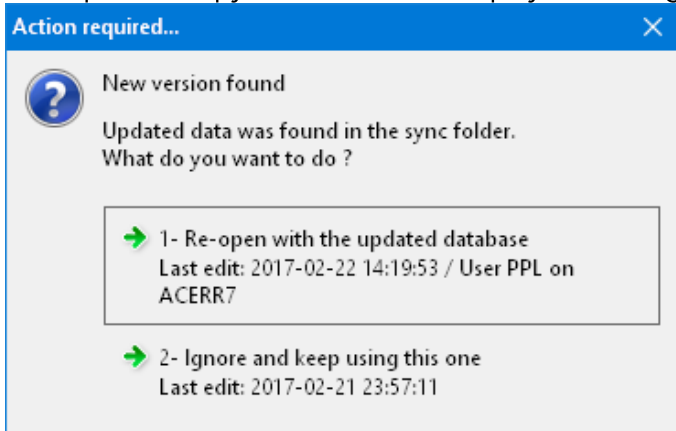
Repeat step 3 for each additional computer

You are now ready to start using your IQBase on multiple computers.

## B- Using IQ on multiple computers

Once properly setup, using a synced copy of your IQBase is the same as a regular IQBase.

If an updated copy is found, IQ will display this dialog:



Unless you want to ignore (and lose) the changes, click the default button to update your database. Views (grids, calendar, etc) will not auto-update, so it is recommended to refresh (F5) all opened views.

Also, be sure to read the next section, **Precautions**, to ensure a safe and smooth synchronization.

## C- What is synced and what is not

All settings in Tools > Options > This file are synced with the exception of the following (which are saved in YourFile.ini and therefore not synced) :

1. Backup paths (2.4.6)
2. .Files path (2.4.11)
3. Sync settings (2.4.8, 2.4.9, 2.4.10)
4. Pane layouts

In addition, the following is also saved in the IQBase:

1. Tab-workspace layout
2. Grid name is used for Search, Scratch, Inbox
3. User Home pages
4. Outline labels

The following settings are not synced (since saved in the installation folder) :

1. List of users
2. User name (IQ uses the logon name to stamp all changes)
3. All settings in Tools > Options > Program Settings (file options.ini)
4. Dialog sizes and default settings (file settings.ini)
5. Menu customizations (files menu.dat and menuhtml.dat)
6. HTML pane's default documents (NewHTML,HTM, NewMHT.MHT, etc)
7. Default Home page

n.b. Only the IQBase is synced using this setup. To sync more, consider putting the program folder on a Dropbox folder (possible but not recommended)

## D- Precautions

1. After making changes to your IQBase, it is important to let your computer update the sync version. You can force a save by doing Grid > Save (CTRL+S) or wait until the auto-backup executes (delay between auto-backups is set in Options > 2.4.3)
2. After the changes have been saved in the Sync folder, you must also wait until Dropbox uploads the changes. You can check the Dropbox status icon on the taskbar. This delay depends on the file size, amount of changes and your Internet upload data rate, but is typically less than 15 seconds. **Once this is completed, you can pause or shut down the computer if you wish.**
3. When restarting a computer (startup or exit from pause), it is important to wait for the update process to complete (Dropbox must build its index on startup and then download all new files). **Do not start editing your IQBase until this is completed.** This may take significant time if there are many and/or large files to download. Monitor the Dropbox status icon on the taskbar. IQ itself will pick up the change very quickly (< 2 seconds) and prompt you if an updated file is available.
4. To avoid needless disruptions, IQ looks for "data" change. UI changes will not trigger an update. Examples of these are grid settings, grid columns, etc.  
If you want these to be sent to other computers, ensure that you make a small data change to trigger the sync process.
5. When using EmailToIQ in conjunction with Dropbox sync, there is a possibility that emails are imported to the older file before you get the chance to sync/overwrite it with the newer one.  
If this happens, you have 3 options:
  - o Set EmailToIQ to be in manual mode (line 2.3.2 = 0)
  - o Open the Email client (or navigate to your web server using a browser) and mark the emails as Unread. IQ will re-import them
  - o Manually re-import previous emails. To do that, right-click on the Tools > Check EmailToIQ now command and select the number of days you want to re-import

[Pierre Admin](#) 2015/04/01 13:10

- 99 views

## 2. Synchronization with Google Services

2. Synchronization with Google Services

### Synchronization with Google Services

InfoQube can sync with the following Google Services:

1. Calendar
2. Tasks

The end goal is to enable synchronization with many Google services, such as:

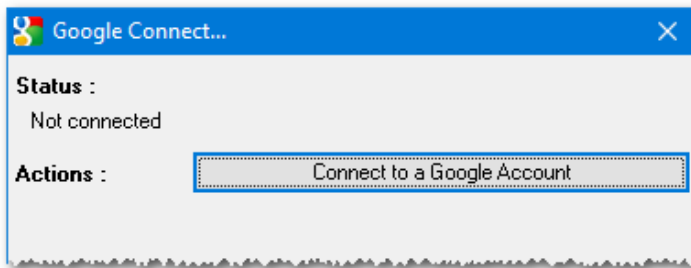
- Contacts
- Keep
- Drive
- GMail

The steps to enable sync are:

1. Authorize access  
n.b.: If the current IQBase was authorized using a previous version of IQ (v114 and previous), it needs re-authorization. **Disconnect and Reconnect** to perform this
2. Set sync parameters for each Google Calendar
3. Set sync parameters for Google Tasks

## 1. Authorize Access

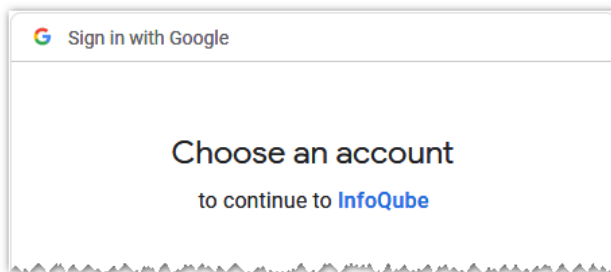
Use Tools > Google Connect to show the Google Connect dialog:



InfoQube uses the latest most secure method to connect to Google services (3-Legged OAuth 2.0). This ensures that it has no knowledge of any password and at any time, you can choose to revoke access.

To do so, access is granted using your default browser.

1. Click the Connect button
2. Your default browser will open (a Windows Security Alert dialog may show, if so, click Allow access)
3. If you are not logged into the Google account you want to use, click on Disconnect and select the account to use:



4. Currently, it seems Google needs to validate that IQ is safe, so until this is resolved, you'll get a warning when connecting to Google:



This app isn't verified

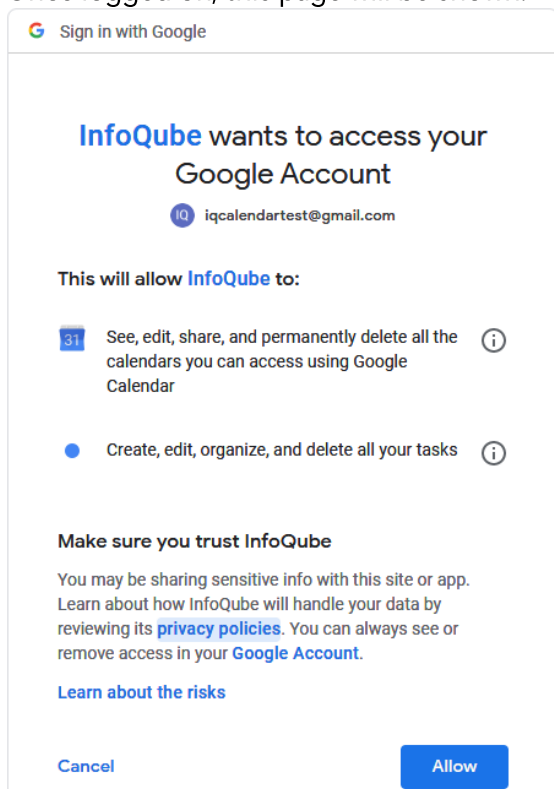
This app hasn't been verified by Google yet. Only proceed if you know and trust the developer.

Advanced

BACK TO SAFETY

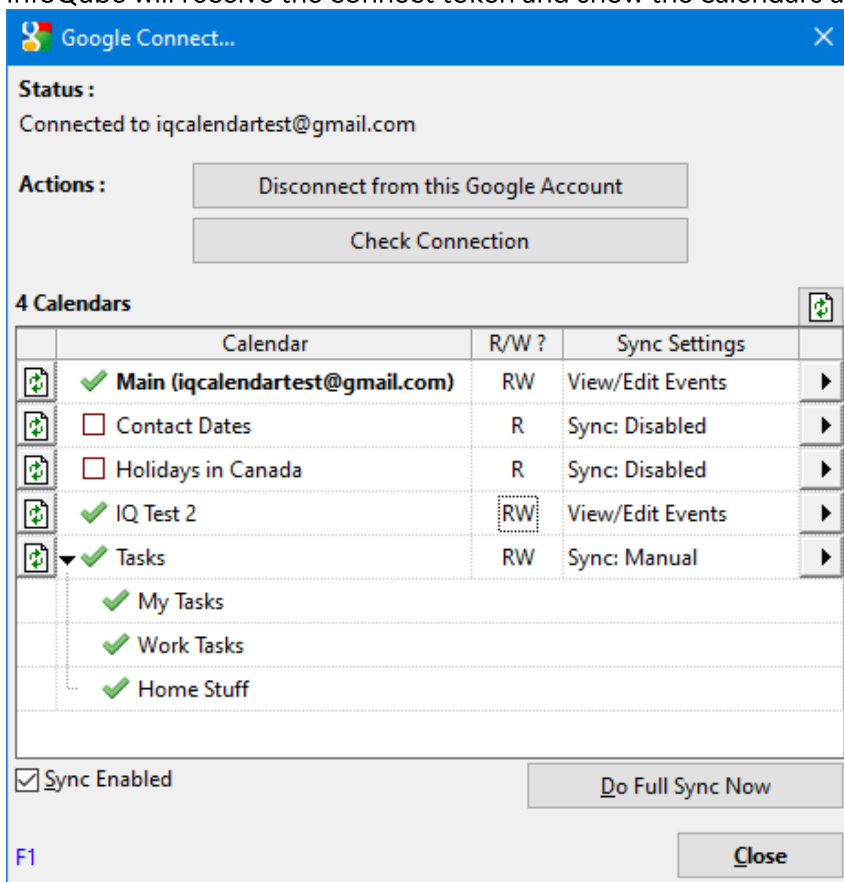
Click Advanced and then Go to InfoQube (unsafe)

5. Once logged on, this page will be shown:



6. Click Allow to proceed and close the browser

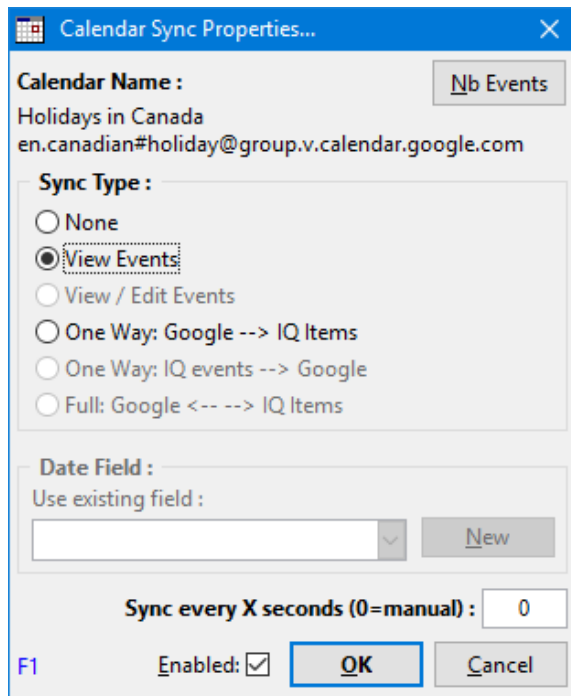
7. InfoQube will receive the connect token and show the calendars and tasks lists in this account:



8. Click on the checkmark, left of the Calendars and Tasks to enable / disable sync

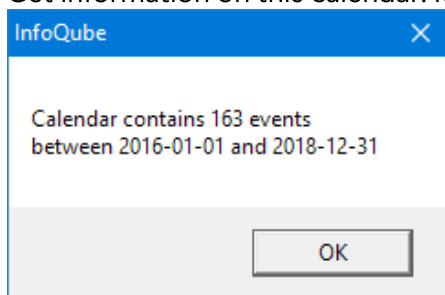
## 2. Set Sync Parameters for each Calendar

1. Click the >> button (right-most grid column) to configure each calendar to be synced:



2. Click the ... menu (top right) to:

1. Get information on this calendar. It will list a few calendar statistics:



2. Delete local copies of all events in this calendar

3. Select Sync Type. It is one of:

1. None
2. View Events
3. View / Edit Events
4. One Way: Google --> IQ Items
5. One Way: IQ events --> Google
6. Full: Google <-- --> IQ Items

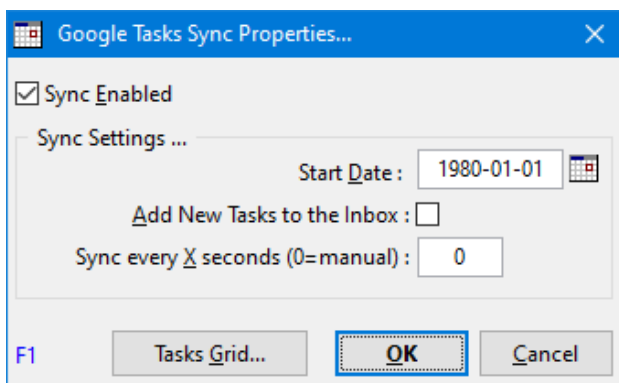
4. The last 3 sync types require a matching IQ field. Select from the dropdown list or click New to create a new date field. See section 3 below

5. Select how often to sync the calendar (0=manual). Each calendar can have different settings

6. Click OK
7. Repeat for all the calendars to sync
8. Once done, click the Close button to dismiss the Google Connect dialog
9. A popup message will be shown on the taskbar informing you that sync is in process. You can continue to work normally

### 3. Set Sync Parameters for Tasks

1. Click the >> button (right-most grid column) to configure task sync:



2. Start Date: Tasks created / updated before this date will not be synced
3. Click the Tasks Grid... button to create a grid pre-configured to view tasks:

#	Task List	Item	DueDate	Done	Notes	ToDo
1	Home Stuff	Invite friends for dinner	2020-03-27		Great food !	2020-03-20
2	Home Stuff	Groceries				2020-03-20
3	Work Tasks	Report to boss				2020-03-20
4	Work Tasks	Prepare for meeting	2020-03-23	2020-03-20		2020-03-20

### 4. Syncing Calendars

Syncing calendars is a simple process:

- Click on the Calendar icon the status bar to schedule a sync
- If Sync is not set to Manual, it will run at the specified interval
- If the Google Connect dialog is open, you can also click on the refresh button (first column in the list) to sync changes or perform a full-sync

Changes made to the Google calendars (list of calendars, calendar color, etc) are not automatically read during the sync process.

To refresh, simply open the Google Connect dialog (or if already opened, click on the refresh icon located just above the calendar/tasks list).



## 4.1. Selecting the Sync Type

InfoQube provides a number of Sync types. To select the most appropriate sync type, it is useful to understand the relationship between items, date values and events.

In InfoQube, each item can have many associated dates. For example, a "contact" item could have:

- Birthday
- Wedding date
- Graduation date
- etc.

Each of these dates are stored in a separate date field. Date fields are shown in the Properties pane and can be shown as a grid column.

The IQ Calendar does not display items. It doesn't display dates either. It displays Events. Each date field-value can be turned into an IQ event and shown in the Calendar.

IQ provides many ways to create events, but the process revolves around selecting a date field-value(s) and instructing IQ to show it in the Calendar.

An IQ event has a date plus many associated properties:

- Duration
- Scheduled, Unscheduled or All-day
- Description
- Location
- Repeating pattern
- etc.

### **Events not linked to an item**

- Events created in InfoQube are always associated with items and date field-values. Deleting an item deletes all its events
- This isn't always the case for events created outside of InfoQube, such as Google Calendar events
- An event not associated with an item can only be displayed in the Calendar, not in grids and other UI
- Whether an item is created for each Google calendar event depends on the sync type

## 4.2 Sync Type: None

To prevent events from syncing, you can either:

- Un-check Enabled in the Calendar Sync dialog
- Set the Sync Type to None

## 4.3 Sync Type: View Events

- To simply view events from a particular Google calendar, select this sync type
- This could be a read-only calendar (national holidays, co-worker's calendar, etc) or any calendar that you don't want to associate with IQ items
- It is the sync type that has the least effect on your IQBase
- At any time, you can decide to set the sync type back to None and events will be deleted from the IQBase
- Since these events are not linked to any item, they can only be viewed in the Calendar, not in grids and other UI

#### 4.4 Sync Type: View / Edit Events

- Similar to 3.2 above, except that events can be modified within IQ. Changes will sync back to Google

#### 4.5 Sync Type: One Way: Google --> IQ Items

- All events created in Google Calendar become IQ items and events
- The date field set as the sync field (in the Calendar Sync dialog, shown above) contains the event date / time

#### 4.6 Sync Type: One Way: IQ Events -->Google

- All events created in IQ become Google Calendar events
- Events modified in Google Calendar are synced with IQ
- Events created in Google Calendar are not synced with IQ
- Events deleted in Google Calendar are not synced with IQ
- If a full sync is performed, events which were deleted in Google Calendar will be shown again in Google Calendar

#### 4.7 Sync Type: Full: Google <-- --> IQ Items

- All events created in IQ become Google events
- All events created in Google Calendar become IQ items and events
- The date field set as the sync field (in the Calendar Sync dialog, shown above) contains the event date / time

#### 4.8 Removing Synced Events

When transitioning from a Sync type to Sync None, users may want to remove local copies of events

For a limited number of events, this is best done using the Calendar:

- In Google Sync, set the Calendar Sync type to None. Click OK to save
- Select one or more events and do Edit > Delete (or hit the Delete key)

For a large number of events, do:

1. In Google Sync, set the Calendar Sync type to None. Click OK to save
2. If the Google Calendar was at some point synced to IQ items, it is best to delete these items
3. In the Calendar Sync dialog, click on the ... menu and select Delete local events
4. You' ll be prompted to delete just events not associated to items or all events created on Google Calendar

See also: [2. IQ Calendar](#)

## 5. Syncing Tasks

Syncing tasks is a simple process:

- Click on the Tasks icon the status bar to schedule a sync
- If Sync is not set to Manual, it will run at the specified interval
- If the Google Connect dialog is open, you can also click on the refresh button (first column in the list) to sync changes or perform a full-sync

Changes made to the Google tasks (number and name of the task lists) are not automatically read during the sync process.

To refresh, simply open the Google Connect dialog (or if already opened, click on the refresh icon located just above the calendar/tasks list)

See also: [Managing Tasks](#)

## Notes:

- For read-only calendars (as the example above), only None, View Events and One Way: Google --> IQ Items are enabled
- When an item has more than one event, each event becomes a separate Google event  
Put differently, the fact that events belong to the same item is not an information that Google Calendar knows
- For the sync types that involves items, each Google calendar must be linked to a distinct IQ date field. That is, a date field cannot sync to more than one Google Calendar

[Pierre Admin](#) 2017/12/02 19:00

- 146 views

## 3. Synchronization with Evernote

3. Synchronization with Evernote

## Synchronization with Evernote

InfoQube can now sync with Evernote !

Evernote sync is available as a two-tier feature:

1. Sync with a single Evernote Notebook and a single Tag (free IQ Outliner): Available in v117Pre1
2. Sync with any / all Evernote Notebooks and Tags (InfoQube IM): Not yet available, in development

## 1. Set-up: Connect and Authorize

Use Tools > Evernote Connect to show the Evernote Connect dialog:




InfoQube uses the latest most secure method to connect to Evernote (3-Legged OAuth 2.0). This ensures that it has no knowledge of any password and at any time, you can choose to revoke access.


The first step is to select the Evernote account.  
Evernote will show a "connect" dialog:



# Evernote

Remember everything important.

 Continue with Google

 Continue with Apple

or

JohnDoe@gmail.com

Continue

The Google and Apple connection do not work. Perhaps Evernote will eventually fix this. So currently, you must use option 3 and **enter your Evernote account name or email + password.**

You'll then be prompted to Authorize access:

### Authorize **InfoQube IM** to access your account

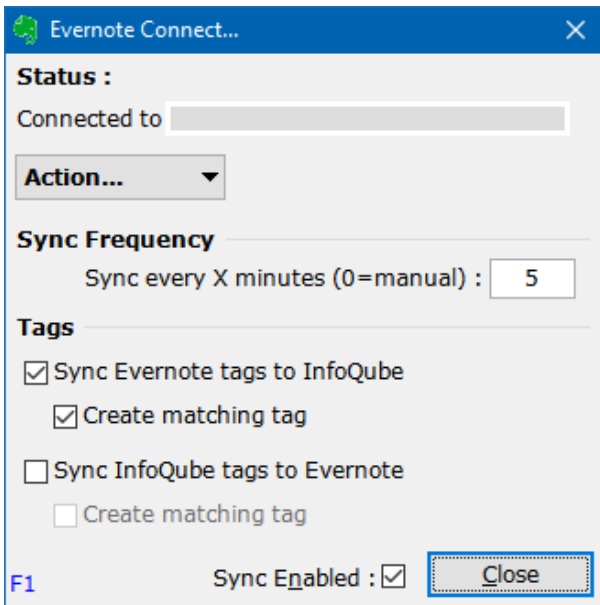
For 1 year

You may revoke access at any time by going to [Applications](#) in your account settings.

<b>InfoQube IM will be able to:</b>	<b>InfoQube IM will NOT be able to:</b>
<input checked="" type="checkbox"/> Create notes, notebooks and tags	<input checked="" type="checkbox"/> Delete notebooks and tags
<input checked="" type="checkbox"/> Update notes, notebooks and tags	<input checked="" type="checkbox"/> Access account information
<input checked="" type="checkbox"/> List notebooks and tags	<input checked="" type="checkbox"/> Permanently delete notes
<input checked="" type="checkbox"/> Retrieve notes	<input checked="" type="checkbox"/> Update user account information

[Visit Third Party Applications Permissions](#) to review a detailed description of each individual permission.

Once authorized, the Evernote Connect dialog will update and you can set sync options:



## 2. Viewing / Editing Synced Notes / Items

On first sync, a notebook and a tag will be created, both named **IQENSync**. The sync engine will import all Evernote notes in this notebook or tagged with this tag.

In InfoQube, you'll find 2 new fields:

1. ENSync: All items with this field checked will sync between InfoQube and Evernote
2. ENTrash: Checked if the note has been placed in the Evernote Trash

A grid is not currently automatically created to view the synced content. Create one with ENSync as the grid source ([details here](#)):

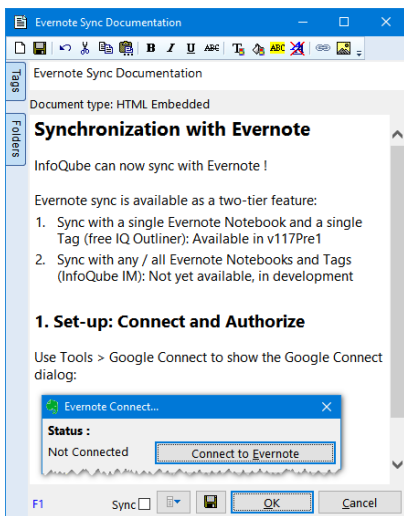
#	ENSync	Item	ENTrash	ItemModified
1	✓	Evernote Sync Documentation	<input type="checkbox"/>	2020-12-23 14:28:27
2	✓	Sub-page 1	<input type="checkbox"/>	2020-12-23 14:33:16
3	✓	note 3	<input checked="" type="checkbox"/>	2020-12-23 14:29:57

In the above sample, there are 3 notes being synced with note 3 being in the Evernote trash.

The actual note content is naturally shown in the Doc pane, which supports all the same editing features as Evernote. A new toolbar is now available which reproduces the Evernote's one:



One can also use the Item Editor to view the Item / Note:



### 3. Syncing between InfoQube and Evernote

- One-way sync (from IQ to EN) is performed whenever the Doc pane / Item Editor content is saved
- Two-way sync will be performed as a background process every X minutes as set in the Evernote Connect dialog (see above)

In addition, there is an icon on the status bar: 

- Single-click will perform two-way sync between IQ and Evernote
- Double-click will open the Evernote Connect dialog

Evernote can handle a variety of content. The following gives the current sync status (as this feature is still in development):

#### 3.1 Information that syncs

1. Title
2. Text content
3. Text formatting (bold, italic, underline, etc)
4. Hyperlinks
5. Tables
6. Highlight colors: Evernote supports 6 highlight colors. During sync, the closest color is used to match the background color selected in IQ
7. Checkboxes
8. Checklists
9. Divider line
10. Web clips source URL: Loose sync in that URL content will sync, but deleted URLs will not sync

#### 3.2 Information that will sync (still in dev)

1. Tags
2. Images
3. Text contained in images
4. Code blocks

#### 3.3 Information that may never sync (i.e. it isn't planned)

1. Media notes
2. Attachments
3. Stacks
4. Google Drive
5. Sketches

## More Information

1. Items deleted in IQ will move the corresponding Evernote note to the trash
2. Toggling the ENTrash field will move / remove notes from the Evernote trash. It is much quicker to do this in IQ than in the Evernote app
3. Items can be arranged in a hierarchy (not possible in Evernote)
4. By default, only top-level grid items will sync with Evernote (i.e. ENSync field checked)  
If you want all items created in this grid to sync with Evernote, in Manage Grids > Data, add ENSync to the setting "Auto-assign field list for all items added to this grid"
5. Once the IQENSync notebook and tag have been created, these can be renamed
6. If you have some content in an existing notebook or tagged with an existing tag and want IQ to use these, follow these steps:
  1. Disable the sync (in IQ)
  2. In Evernote, delete the IQ generated notebook and/or tag
  3. Rename the existing notebook/tag to IQENSync
  4. Re-enable sync and perform a full sync
  5. Once sync has completed, you can rename the notebook/tag to their original name
7. Evernote imposes API usage limits. If this is exceeded, the service will be suspended for a significant amount of time (30 minutes or more). The Evernote icon on the status bar will show !! and give the number of minutes before sync can resume
8. The free Evernote tier allows for 2 devices (Evernote > Account > Devices). This is typically a mobile device and an app (Windows, macOS, Web)
9. As InfoQube is not considered as a device, but rather as an application, it does not count as a device and can be a third method to access your EN content

[Pierre Admin](#) 2020/12/23 11:45

- 213 views

## 4. Synchronization with Remote Databases

4. Synchronization with Remote Databases

## Synchronization with Remote Databases

**InfoQube** can pull data from external data sources, such as SQL Server, MySQL, Oracle, MSAccess, etc. Any ODBC data source can be used.

When configured correctly, a click of a button is all that is required to refresh the data!

This is an advanced feature which requires some database query knowledge to configure it correctly.

The sync is done through a configuration file (xml type). This file defines:

- The connection string
- The SQL statement to retrieve the data (use Access, Enterprise Manager or other similar tool to generate the statement)
- The field mapping between the back-end database and InfoQube ( back-end fields are [ ] enclosed, otherwise a fixed value will be imported)
- The synchronization parameters. (Unique record identifier field, Last update date, etc)

The back-end database can be local or remote (either publicly visible or through a VPN).

To enable this feature:

In Tools > Options > This Database > Data storage

- Enable Remote database one-way sync
- Set the auto-sync delay (in minutes, 0=manual only)
- If syncing with only one remote database, enter the sync config file
- If syncing with more than one remote database, leave Sync Config File blank and put all config files in the same folder as the IQBase. InfoQube will ask you which ones to sync (uses SQLSync\*.xml as a matching pattern)

2 examples are provided here:

- Sync with the Online User Manual (mySQL server)
- Sync with a fictitious SQL Server database

[Pierre Admin](#) 2016/11/22 21:42

- 85 views

### **Sync with a fictitious SQL Server database**

Sync with a fictitious SQL Server database

## **Sync with a fictitious SQL Server database**

The fictitious SQL Server back-end database contains contact information (companies, contacts, record status, etc). It is used as part of a secure web-site, where users can view/modify their information. The managing organization already uses InfoQube for CRM type information and wanted to link to the web-site information as its agents were answering calls/emails.

The following configuration file can be used:

```
<ConnectionString>PROVIDER=SQLOLEDB.1;PASSWORD=SomePassword;PERSIST SECURITY INFO=TRUE;USER ID=SomeUser;INITIAL CATALOG=YourDataBase;DATA SOURCE=SQLServerIP;Use Procedure for Prepare=1;Auto Translate=True;Packet Size=4096
</ConnectionString>

<Password> </Password>
<FieldMap>
[company_id] IDSQL
[steward_no2] NoEnterprise
[company_name] Item
```



[address1] Address  
[address2] Address2  
[address3] Address3  
[city] City  
[province] Province  
[postal\_code] PostalCode  
[country] Country  
[website] WWW  
[phone\_number] Tel  
[fax\_number] Fax  
[first\_name] FirstName  
[last\_name] LastName  
[title] Titre  
[telephone\_no] TelContact  
[telephone\_ext] Ext  
[last\_modified] DateUpdate  
[email\_address] email  
IMPORT IDStatusSQL

1 Contacts

</FieldMap>

<Source>

```
SELECT dbo.COMPANIES.*, dbo.COMPANIES_S.steward_no AS steward_no2, dbo.CONTACTS.first_name,
dbo.CONTACTS.last_name,
dbo.CONTACTS.title, dbo.CONTACTS.telephone_no, dbo.CONTACTS.telephone_ext,
dbo.CONTACTS.email_address
FROM dbo.CONTACTS_S RIGHT OUTER JOIN
dbo.CONTACTS ON dbo.CONTACTS_S.contact_id = dbo.CONTACTS.contact_id RIGHT OUTER JOIN
dbo.COMPANIES INNER JOIN
dbo.COMPANIES_S ON dbo.COMPANIES.company_id = dbo.COMPANIES_S.company_id ON
dbo.CONTACTS.company_id = dbo.COMPANIES.company_id
WHERE (dbo.CONTACTS_S.primary_contact = 1) AND (dbo.COMPANIES.last_modified > CONVERT(DATETIME,
'[LASTUPDATE]', 102))
```

</source>

<RecordIDField>IDSQL</RecordIDField>

<RecordStatus>IDStatusSQL ADD UPDATE</RecordStatus>

<RecordDateField>DateUpdate</RecordDateField>

<LastUpdate>2007-03-15 07:00:00</LastUpdate>

Notes:

- The Password key is optional and if present, is the encrypted password (inquire about the encryption utility)
- Field mapping format is: [BackEndField] TABKey InfoQubeField or Value TABKey InfoQubeField. In the latter case, InfoQube field will be assigned Value. In the above example, Contact field is checked for all imported data and the string "IMPORT" is placed in the field IDStatusSQL
- Source: standard SQL select statement with 1 exception. The string [LASTUPDATE] will be replaced by the LastUpdate key. This way, only changed data is read. If this is not used, all recordset data will be read on each update, which may take a long time.
- RecordIDField is the InfoQube field to hold the back-end database record key
- RecordStatus format is: InfoQubeField TABKey AddString TABKey UpdateString. This step is optional but will fill the InfoQubeField with AddString if adding, and UpdateString on record update. In the above example, ADD and UPDATE will be placed in the field. This way managers can process these separately

- RecordDateField is the InfoQube field which contains the record last change date (used in conjunction with the LastUpdate)
- LastUpdate is the date/time of the last update. Used in conjunction with the SQL Select statement to read new/changed data only

[Pierre Admin](#) 2017/07/05 17:14

- 44 views

## Sync with the Online User Manual

Sync with the Online User Manual

## Sync with the Online User Manual

InfoQube can sync with the Online User Manual so that any new content / changes will automatically be imported in any IQBase.

The "Welcome to InfoQube" IQBase is pre-configured to connect with our web server.

Steps are:

1. Download and install the [mySQL ODBC connector \(version 8.0\)](#)  
Select Windows (x86, 32-bit), MSI Installer or use this [direct link](#)
2. You'll be asked to login to Oracle. You can, but better still simply click on **No thanks, just start my download**
3. Install the downloaded file (mysql-connector-odbc-8.0.xx-win32.msi)
4. To synchronize, do Tool > Database management > Remote database sync  
(you can customize the toolbar [right-click ->customize] to add it to a toolbar if you want)

To configure another IQBase, a few fields must be created. The extra steps are:

1. In Field Management, create the following fields:
  - o IQDoc: Yes/No
  - o IQDocDate: Date: Doc update date
  - o IQDocNID: Number: Doc node ID
  - o IQDocPID: Number: Doc parent node ID
  - o IQDocStatus: Text: New / Update status
2. To have a direct link to the online page, add the following in the Equations > Auto-assign section of the field IQDocNID:  
AM: [URL]="<https://infoqubeim.com/drupal5/node/>" & [IQDocNID] | E: [URL]=
3. Create a new grid IQDoc (will automatically use the field IQDoc)
4. In Tools > Options > This File > Data storage
  1. Enable Remote database one-way Sync
  2. Set the auto-sync delay (in minutes, 0=manual only -- recommended)
  3. In Sync Config file, browse to select the config file. The one provided is SQLSyncIQDoc.xml (located in AppFiles folder)

4. If syncing with more than one remote database, leave this blank and put all config files (named SQLSync\*.xml) in the same folder as the IQBase. InfoQube will ask you which ones to sync.

When using sync, the following applies:

1. Sync main field is IQDocNID.
2. If an item exists with book page node id, it is used else an item is created
3. The fields Item and HTML are updated with the doc content
4. There are a few Regexp substitutions made, as defined in the SQLSyncIQDoc.xml file
  1. Relative paths are converted to absolute ones
  2. Internal links (node:nodeid enclosed by [ ]) are converted to URLs and to an IQBase internal link (IQDocNID=nodeid)
5. You can add any other field values / tags and these will not change after a sync
6. New doc items will appear under the correct parent item. It's positional order may not match the web site though
7. The last line of the sync config file gives the date of the last sync (in ICal format). Only changes more recent than this date will sync. To re-sync with the whole user manual, remove that date:  
i.e. change `<LastUpdate>20181120T011501</LastUpdate>` to `<LastUpdate>`  
`</LastUpdate>` and save the file.

The Online User Manual is nice, but having an updated copy right inside InfoQube is so much nicer to navigate, read, search, filter, etc.

## Troubleshooting

If you have difficulty connecting to the remote database, try disabling the router firewall. If it then works, configure to open port 3306, which is used by IQ to access remote databases

[Pierre\\_Admin](#) 2008/11/22 21:44

- 55 views